

SL-2000XL



- Precision saw spindle, chain block assembly, and saw table are subject to special heat treatment ensuring both incredible wear but unsurpassed machine tolerance.
- Preloaded arbor bearings ensure long-term cutting accuracy, maximum arbor performance and wear resistance
- The 2000 series inner blade flange is machined from the same steel cylinder as arbor body vs. inferior machine arbors with friction welded flanges.

- Incredible 4" cutting depth is accomplished with a 330mm / 13-1/4" blade
- Precision engineering guarantee and outstanding 12' glue line tolerance.
- Designed to meet the production requirements of companies requiring glue line accuracy, high feed rates, ripping of heavy lumber and multiple shift demands
- Frequency inverter controlled variable feed speed 30ft-120ft/min is accomplished by simply turning a dial
- 3150 lbs of robust cast iron and steel construction provide years of production performance
- Simple 1 piece chain and race assembly allow maintenance free operation
- **18"**column to blade capacity is a major advantage for ripping glued panels or plywood.
- Three rows of anti-kickback fingers provide the utmost in safety protection

Northtech Industrial Ripsaws NT-SL2000XL



PRECISION CONVEYOR CHAIN AND GUIDE RAILS

The chain blocks are diamond cut, precision machined and heat treated for positive lumber feeding. Expect years of glue line accuracy from these highly engineered components forged and cut from the best possible steel and cast iron.

SOLID STEEL CYLINDRICAL GUIDE RAIL AND QUICK CAM CAST IRON FENCE

Ensures accurate setup, quick movement, dust free operations.



ADJUSTABLE HOLD-DOWN ROLLERS

The solid steel and bearing integrated holddown rollers assure precise lumber ripping while adding safety to overall applications. The 8 rollers provide integration with the Northtech precision chain feed system, dovetail together to allow an unsurpassed 12' glue line guarantee.



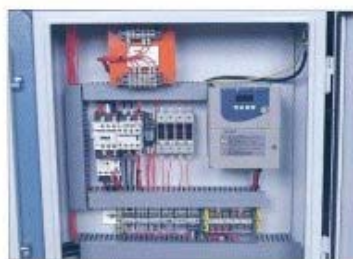
SAFETY FOR OPERATOR

Two upper anti-kickback fingers and one lower anti-kickback finger to guarantee safe operation. This highly engineered safety station outperforms all other saws in its class.



PRESSURE ROLLER SYSTEM

Precise alignment of rollers in cast iron upper beam provide both unparallel cutting tolerances and simple maintenance. Rollers float up to 1/2" to add reliable holddown parameters to tapered and warped lumber.



VARIABLE FEED SPEED

The high-torque frequency inverter controlled variable feed speed has a range of 40ft - 120ft/min. Isolated controls are integrated with a UL/CE approved inverter feeding system (infinitely variable). This exclusive design facilitates immediate feed speed change vs. inconvenient mechanical systems. An excellent addition for lumber operations that rip multiple species and varying thicknesses. Improves work flow by up to 30-40%.



SELF-LUBRICATOR (MECHANICAL TYPE)

Lubricant flow rate is adjusted automatically with the variation of feed chain speed. Auto shut-off of chain and warning lamp indication if oil levels are low. Applies oil to (5) precise points on chain and race, guaranteeing maximum chain life.

OUTFEED PRESSURE PLATE

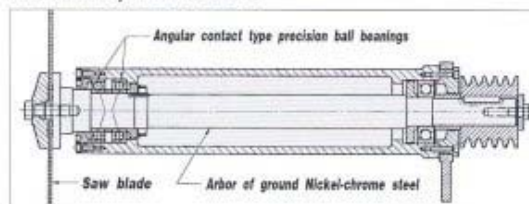
The outfeed holddown (pressure plate) helps to eliminate vibration on lumber ends and increase operator safety.

SIDE GUARD

The side guard provided at the infeed end gives added safety for the operator.

SWING DOWN REAR TABLE

Avoids possible damage to the machine by preventing short work pieces and defective lumber from accidentally sliding between the chain and the table when they are fed to the end.



PRECISION-BUILT SAW ARBOR MOUNTING

Made of nickel-chrome steel, large in diameter, accurately ground and dynamically balanced. It runs on precision angular contact type ball bearings which eliminate any radial run out and axial thrust.



SAW ARBOR IS HIGH FREQUENCY HARDENED

Blade clamping flange is precision machined from solid material instead of friction-welded material. This precision milled and dynamically balanced arbor guarantee years of trouble free operations and glue line accuracy.

SPECIFICATIONS:

Model	NT-SL2000XL
Minimum working length	8" (200 mm)
Maximum thickness	4" (100 mm)
Distance between saw and column	18"
Saw arbor motor	15 HP / 20HP Optional
Saw arbor speed	4500 rpm
Saw blade diameter	10"-13" (Ø250-330 mm)
Saw arbor diameter	1" / 1.5" (Optional)
Feed motor	2 HP / 3 HP (Optional)
Feed speed	30-120 ft/min
Number of holding rollers	8 (Solid steel)
Work table height	31" (810 mm)
Table area (W x L)	36.6" x 64.6" (930 x 1640 mm)
Overall dimensions (W x L x H)	44" x 78.7" x 63.8" (1120 x 2000 x 1620mm)
Net weight	3100 lbs (1409 kgs)

- We reserve the right to amend any of the above specifications without prior notice.
- Higher feed speed to 160 ft/min is available on specialized order.