

[thayermachinery.com](http://thayermachinery.com)

1-800-323-7430

# Cameron

## A U T O M A T I O N



# Quick Rip

## ***THE FENCE-LESS GANG RIP SAW OPTIMIZER***

### **COMPACT, SIMPLE & COMPLETE**



*Unquestionably the Most Machine for Your Money*

100 Parker Avenue • Poughkeepsie, NY 12601 • Tel: 845.452.0691 • Fax: 845.452.6910

# Advantages & Operations

The Quick Rip is the new compact, simple and complete gang rip optimizer for the small to medium sized shop. It is ideal for operations that are running 24" or larger Fixed Arbor Gang Rip Saws. It will quickly transform any hand fed gang saw to a full and complete rip optimizing board feeding system without the complications of additional equipment.

The Quick Rip is a full featured rip optimization system. It has many advantages over hand fed gang rip operations as well as other optimization systems.

## Advantages Over Hand Feeding

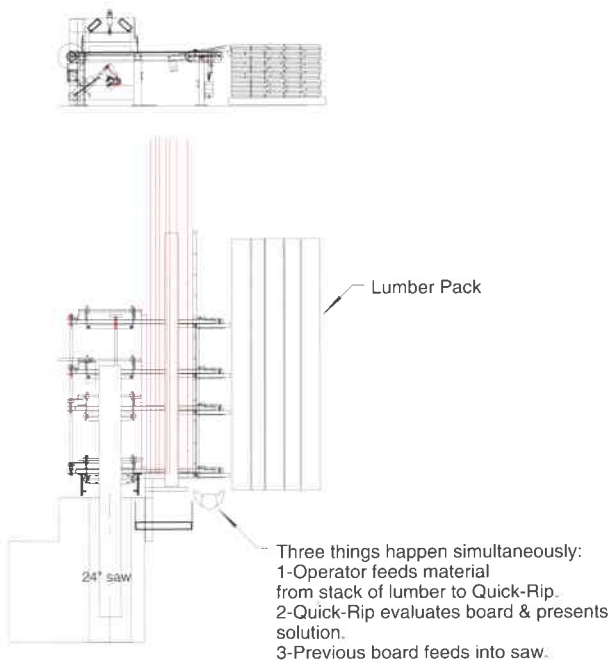
- 5-8% Increase in yield.
- Extremely accurate positioning of boards. (No yield loss due to misalignment).
- High Throughput (8-10 or more boards/minute).
- Increase Safety.
- Tallies material automatically.

## Advantages of the Quick Rip

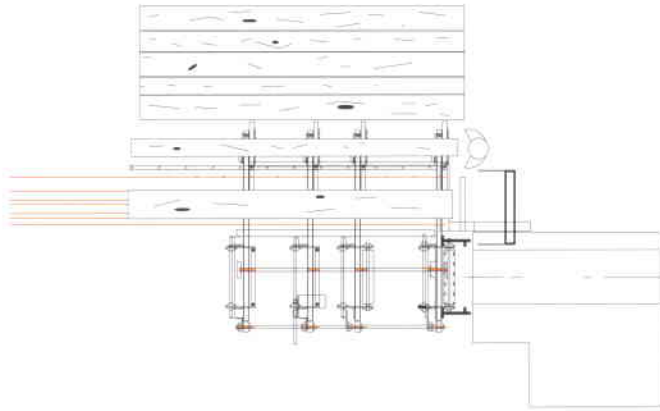
- Complete Fence-Less optimization in a compact size
- Single operator loads and defects
- Machine ships set up
- No additional infeed material handling equipment required
- Automate any Gang Rip Saw
- Increase safety
- Up & Running in 1 day
- Optional Automatic Skewing for even higher yields
- Catalog each and every board
- Expandable to our fully Automated Opti-Rip

- 1 Easy To Ship**
- 2 Easy To Install**
- 3 Easy To Operate**

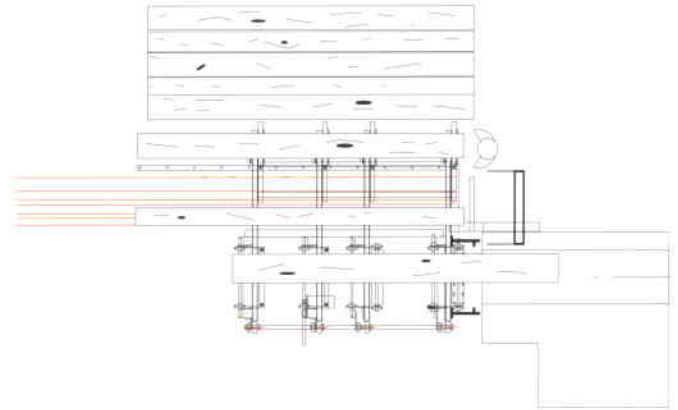
**Easy To Pay For!**



# Advantages & Operations



*Board #1 is measured and evaluated for the highest value. The operator presses the "process" button and board #1 is delivered to the saw.*



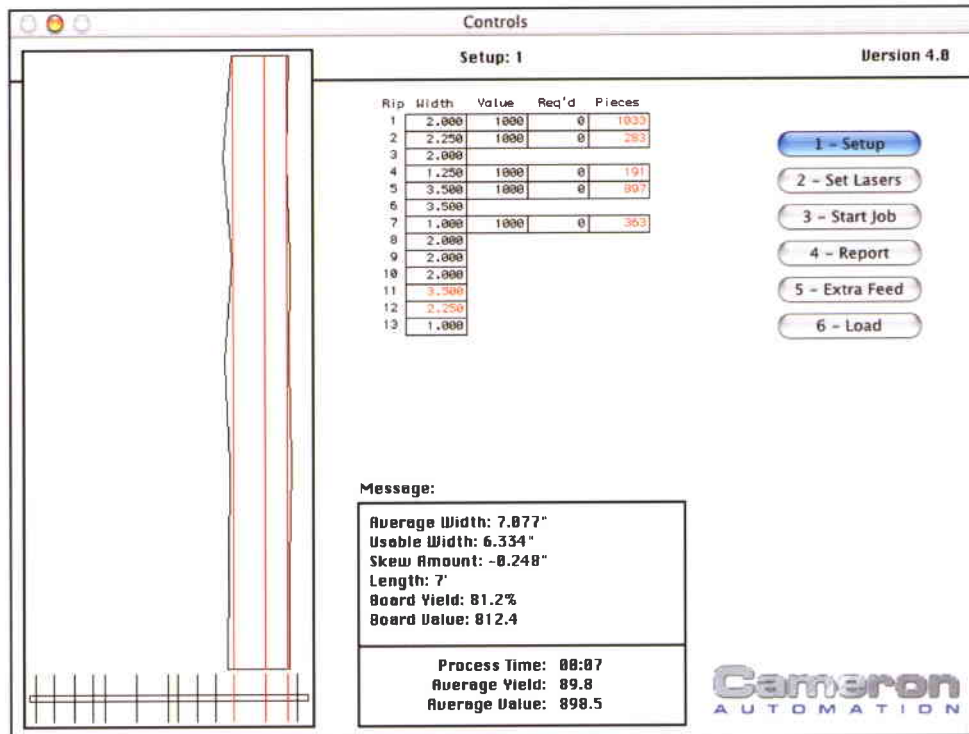
*Board #1 is positioned in front of the saw, pinch rollers pick it up from the conveyor and feed the saw. At the same time, board #2 is measured and delivered to its position under the lasers for evaluation. When board #2 is accepted, the "process" button is pushed again and board #2 is delivered to the saw and the cycle is repeated.*

## Advantages over other systems

- Its low price makes optimization attainable for small and mid-size companies.
- All software is written in house allowing the ability to upgrade or change quickly and inexpensively.
- Quick Rip's foot print is the smallest in the industry. No additional floor space is required over hand feeding.
- Wirelessly networks with Quick Chops to integrate tallies from rip and chop operations.
- Fence-less design allows for the highest yield of any fixed arbor gang rip system.
- Laser Scanners are placed at 1 foot increments getting the full profile of the board as it is scanned. This enables the machine to see side bend and/or taper.
- Optional Auto Skew increases yield by automatically positioning the board at the correct angle for the best rip results.

The Quick Rip with Servo Infeed represents the next step in gang rip saw optimization. Instead of forcing the lumber to conform to the constraints of the machine, the machine conforms to the idiosyncrasies of the lumber, resulting in higher overall yield.

# Quick Rip Software



Screen shot of software showing board profile and position on arbor

## The Software

All software is designed and programmed at Cameron Automation. This enables us to provide our customers with updates, changes, and fixes quickly and inexpensively; most often at no charge. It helps us to react to our customer's needs rapidly.

The software is simple and intuitive. Easy to use, easy to understand yet powerful.

- Quickly and very accurately measure the board in multiple positions (up to 16).
- Quickly present the highest yield solutions to choose from.
- Calculate yield before ripping.
- Keep accurate tallies of net ripped widths.
- Adjust priorities for required amounts.
- Evaluate arbor set ups and determine which is the best.
- Arbor generating software included allows optimizing new arbor setups.
- Download and catalog each and every board that Quick Rip scans.
- Run simulations based on previously scanned boards or random width material.
- Network to other computers anywhere an Ethernet or computer network is available.
- Built in web server allows viewing of reports from any web browser.
- Wirelessly network with the Quick Chop to integrate tallies from rip & chop operations.

- **Factual Statistics**

Since the Quick Rip measures the width of each board in multiple locations, the true, usable yield of the board can be calculated. The sum of rips produced is compared to the board width you bought, giving you factual yield values you can depend on.

- **Most Profitable Choice**

The Quick Rip uses actual values expressed in dollars per thousand board feet for each different net rip width in choosing the most profitable rip combination for each board. The system automatically gives priority to the rip width which is worth the most to you.

- **Computes Product Value**

The Quick Rip also calculates, in dollars per thousand board feet, the board value after ripping by relating the value of rips produced to the cost of the original boards. When a run is completed, these values can be used to instantly determine how much value was gained in the ripping operation. Suppliers and loads of lumber can easily be evaluated by comparing these output values.

- **Arbor Optimization**

One of the most important factors in maximizing yield (or value) when running a gang rip saw is properly configuring the saw spacing on the arbor. Because there can be as many as 39 million ways to arrange a particular arbor, this can be a daunting task for a human. A computer, however, can quickly evaluate and optimize these arbors. Built into the Quick Rip software is a powerful arbor optimization program that can result in dramatic yield increases. This arbor optimizer can be run either on the Quick Rip itself or on a desktop computer using the simulation software provided.

- **Minimum Yield**

When minimum yield is used in a set up, the Quick Rip will place boards below the minimum yield on the last blade of the arbor to be "straight

lined." This will allow the board to be used in another set up that may result in higher yields. This feature can be over ridden by the operator at any given time. Also, any board can be "straight lined" by hitting a button on the control panel.

- **Production Tracking**

The length measurement feature enables the system to record the lineal footage of each rip width and the actual board foot volume of lumber processed.

- **"What If?" Simulation**

The Quick Rip can simulate a production run to test different arbor setups. Board data measured by the machine from an entire production run is saved for each set up. This data or a random sampling generated by the computer itself, can be used to calculate yield and production results without actually ripping boards. With this tool, you can quickly and easily fine tune your arbor configurations.

- **Operating System**

The Quick Rip control system utilizes an off the shelf laptop computer and an industrial PLC. The PLC interfaces with the machine, controlling all input and output functions and performing all of the critical timing. The laptop performs all of the calculations and interfaces with the operator. The two are connected only by an Ethernet cable. This design allows virtually any computer to be used to run the machine and allows easy networking with the rest of the factory.

- **Bottom Line**

Very simply, The Quick Rip will add dollars to your bottom line. Increased yield of raw material will increase your profits. The Quick Rip's design also allows you to value different rips according to your production needs. This reduces inventory and shortens delivery time. Our simple design is a small investment compared to your increased profit.

# Features



*Board Not Skewed*



*Auto Skew Device picking up board*



*Board Skewed for High Yield*

Quick Rip's optional **Auto Skew** device will automatically adjust the board to the appropriate angle for the optimum yield. The Quick Rip scans the entire board and sees the board's profile. It determines how to place the board and get the highest yield. After the board has been scanned, a cylinder picks up one end of the board and the servo controlled belts move the other end of the board to align it

for maximum yield. The cylinder drops and places the board entirely on the belts to show the operator exactly how the board will be ripped. Because the Quick Rip does not use a fence, the board is fed into the saw as the operator sees it. Yield gains for skewing can be as much as 2% and with the optional Auto Skew Device, it is done automatically while the operator is loading the next board into the Quick Rip.

# Return On Investment

Quick Rip's pay back is fast. An operation that runs a 24" Gang saw three (3) times per week and averages 5,000 board feet per day will have a less than one (1) year pay back. To show this, follow the example below:

5,000 board feet per day for 3 days per week = 15,000 board feet per week.

At \$2.00 per board foot, total cost of lumber = \$30,000.00 per week.

An increase of 5% yield = \$1,500.00 savings per week or \$75,000.00 per year\*.

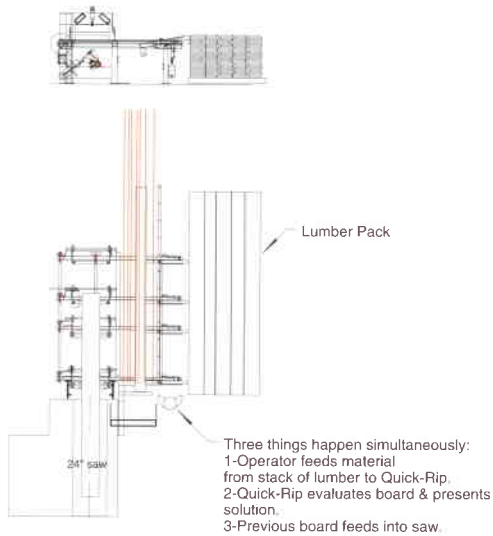
Based on these figures, it only takes **10.64 months** for a complete pay back on the investment of a Quick Rip.

Plug in your production numbers and see for yourself or call us and we'll help you see how quickly you can save with a Quick Rip.

\* Based on a 50 week work year.

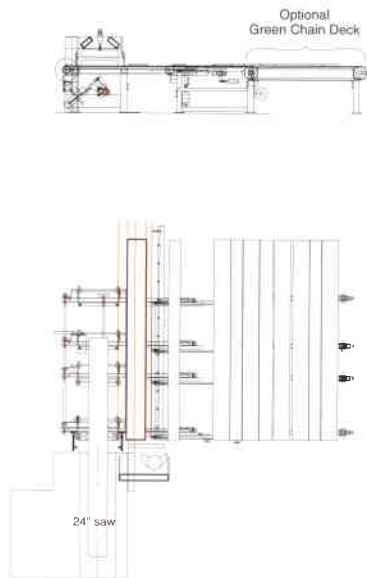
# Quick Rip Expands

**From this:**



- Complete Fence-Less Optimization in a Compact Size
- 5-8% Increase in Yield over hand feeding
- High Throughput (8 to 10 or more boards/minute)
- Fed by Scissors Lift
- Single Operator Loads and Defects
- Machine ships set up.
- No Additional Infeed Material Handling Equipment Required
- Automate any Gang Rip Saw
- Up & Running in 1 Day
- Expandable to our fully Automated Opti-Rip

**To this:**



- Fully Automated Fence-Less Optimization System
- Highest Yield of any fixed arbor gang rip optimization system
- 10 to 12 Boards/minute (Next board feeds under previous one for faster operation)
- Full Board Profile shown from 16 Laser Scanners at 1" increments
- Feeding Options
  - Planer onto Greenchain Deck
  - Tilt Hoist to Descrambler
  - Tilting Scissors Lift
- Single Operator Monitors Operation
- Up & Running in 2-3 Days

# Specifications

## Dimensions:

Overall Height: 93"  
Overall Width: 104"  
Overall Depth: 200"

Mounting: Universal compatible with all gang rip saws.

## Specifications:

Maximum number of lasers: 22  
Power Requirements: 220/440V (3 phase)  
Board Capacity; 4' to 12 Length\*, up to 8/4" Thickness

## Options:

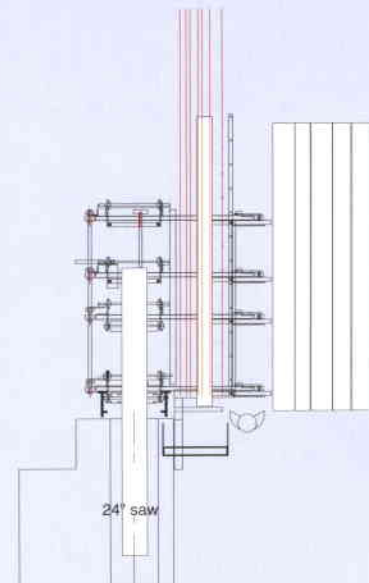
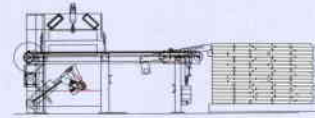
Additional lasers (Standard unit has 8 lasers)  
Printer for production

Additional Pinch Roll Assembly for short stock

\* optional 3rd Pinch roll required for material from 36" to 4'

## Price:

Standard Machine: \$66,500.00



# Other Cameron Products



The **Quick Chop** is a complete and affordable push feed chop optimization system. The Quick Chop is simple to operate and uses the familiar crayon based marking for defecting and grading. The Quick Chop will quickly transform any hand fed chop operation into a full and complete chop optimizing board feeding system. The Quick Chop has the highest yield with the lowest cost for any push feed chop optimizing saw anywhere.



The **Opti-Match** is the only machine to completely automate the color matching process for high quality solid wood panels. The Opti-Match combines innovative scanning and sorting technology with complex computer programs to build and stack sized, color matched, and color blended panels, automatically. It completely eliminates the labor intensive and subjective job of manual color matching.