

[thayermachinery.com](http://thayermachinery.com)

1-800-323-7430

# Cameron

## AUTOMATION

**Quick**  
**CHOP**

***PUSH FEED  
CHOP OPTIMIZING &  
DEFECTING SYSTEM***



*Unquestionably the Most Machine for Your Money*

# Quick Chop



## Advantages

The Quick Chop is a complete and affordable push feed chop optimization system. It has many advantages over hand fed chop operations as well as other optimization systems.

### ***Advantages over Hand Feeding***

- Increases yield of cut stock
- Higher production
- Tallies material automatically
- Better consistency in chop lengths.

### ***Advantages over other systems***

The Quick Chop has the highest yield with the lowest cost for any push feed chop optimizing saw anywhere. Compare the Quick Chop's features to systems that cost twice as much:

- Simple and quick luminescence crayon marking is used for defects or grading.
- Unique design enables operator to be marking

two or more boards ahead of board being chopped. This equals higher productivity.

- Quick Chop has a full featured computer system, not just a keypad.
- Mechanical up-cut saw is extremely fast and delivers a smooth cycle operation for accurate and quality cuts.
- Accuracy within  $\pm.015$ ".
- Network with office computers to import cut lists from spread sheets and review reports.
- Welded frame allows the Quick Chop to ship set up. Installs in an afternoon.
- Wirelessly networks with other Quick Chops and the Quick Rip to integrate tallies from your rip and chop operations.

All of these advantages add up to a fast, reliable, and easy to use chop optimization system. The Quick Chop is unquestionably the most machine for your money.

# Quick Chop Features

## Operation

A simple set of buttons allow the operator to choose which Cut Bill to use on the board being processed. Unlike other systems that require the operator to walk the entire length of each board to “mark” the defects with their special digitizer, the Quick Chop allows the operator to stand at one position and mark defects with a fluorescent crayon. The Quick Chop determines the cut solution based on the defect crayon marks and the Cut Bill. Special marks can even be used for grading purposes. This allows for multiple Cut Bills to be used on the same board.



Control Buttons

With the Quick Chop, parts can be chopped based on a value or a required piece count. The Quick Chop will automatically monitor the tallies of each piece and make appropriate changes to get targeted piece counts, all the while maintaining a high yield. Quick Chops can also be wirelessly networked together or with the Quick Rip to integrate tallies from rip and chop operations. This will help gain higher yields and maintain better inventory of cut stock throughout your entire operation.

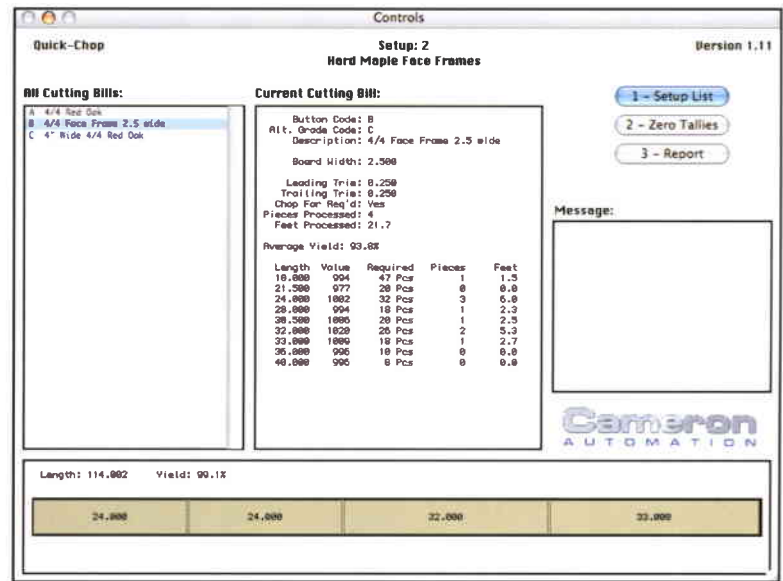
An optional ink jet printer can print directly onto



Board Length Printed on Board

each cut piece enabling operators to easily sort parts from the

out feed of the machine. The printer can print the size, reference number, or cut bill.



Main screen of Quick Chop Software showing current cut bill and current board being chopped.

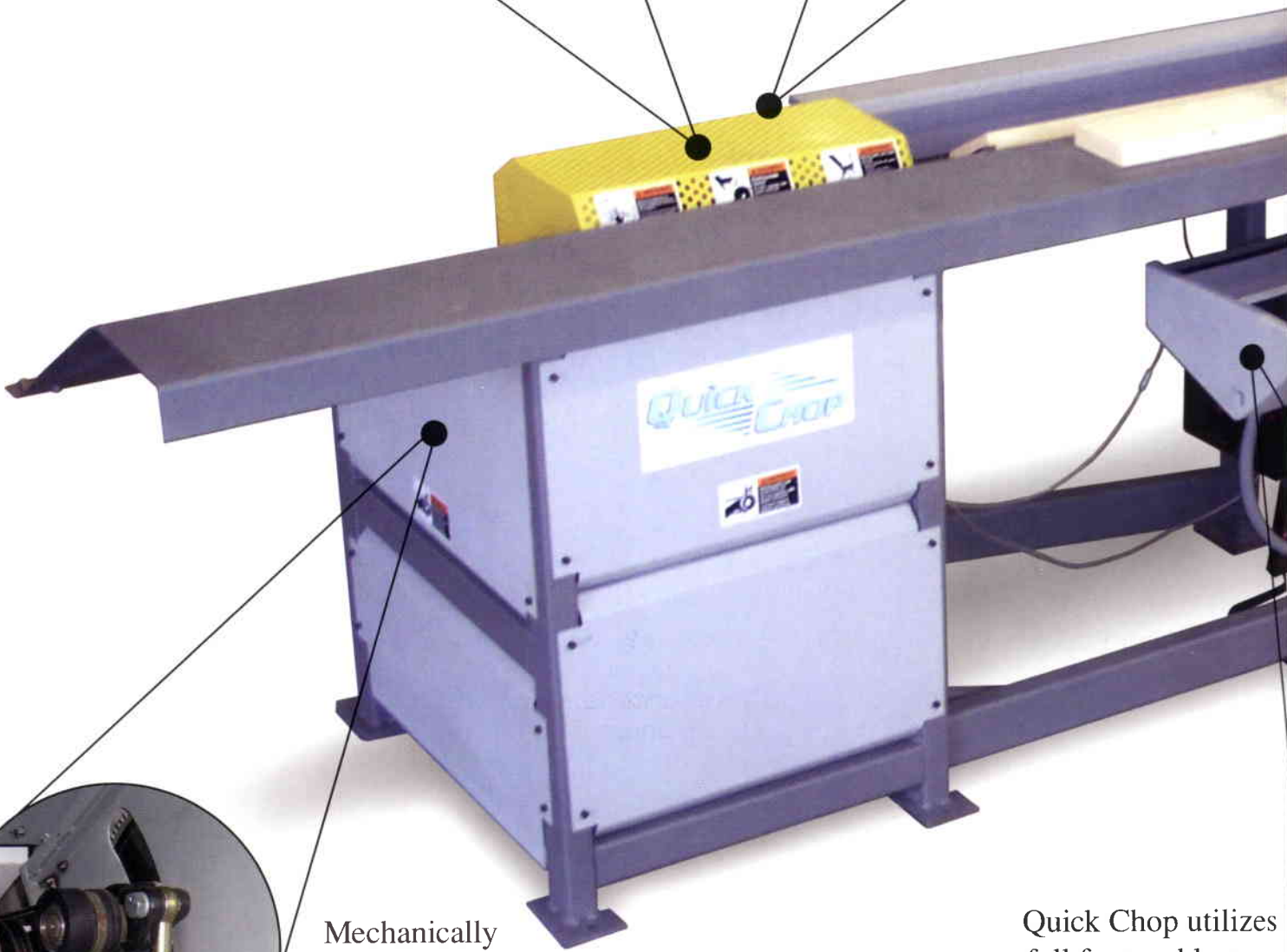
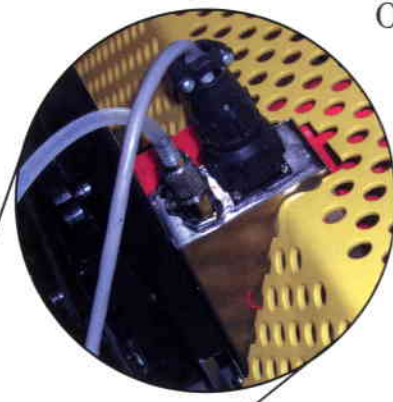
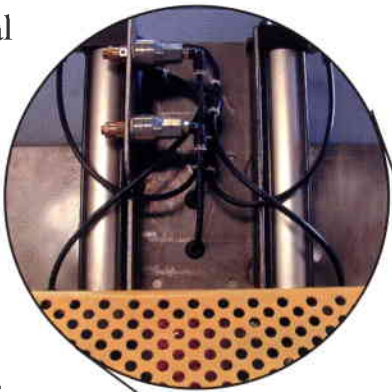
## Software

Quick Chop's software runs on a full featured laptop computer, not just a keypad entered PLC. Since the Quick Chop is designed with the custom shop in mind, the software is sophisticated yet easy to use and easy to understand. Quick Chop's software features:

- Easy data entry.
- User friendly operation.
- Monitoring of multiple cut bills.
- Cut solution shown prior to chopping.
- Chop for value or required piece count
- Easily import from spread sheets or other software.
- Simulate production runs.
- Simple point and click interface.
- Communicate with other Quick Chop systems or the Quick Rip within the plant for maximum yield.
- Monitor production and view reports.

The Quick Chop software out features other chop optimizing software costing twice as much.

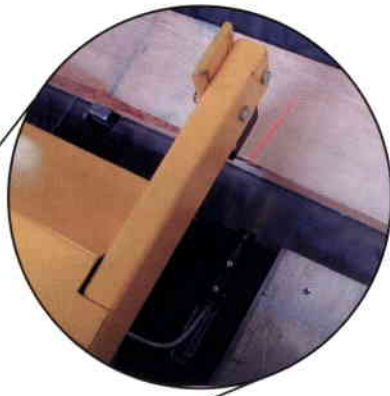
Optional  
pneumatic  
hold down  
cylinders  
ensure  
extremely  
bowed  
strips are  
cut square.



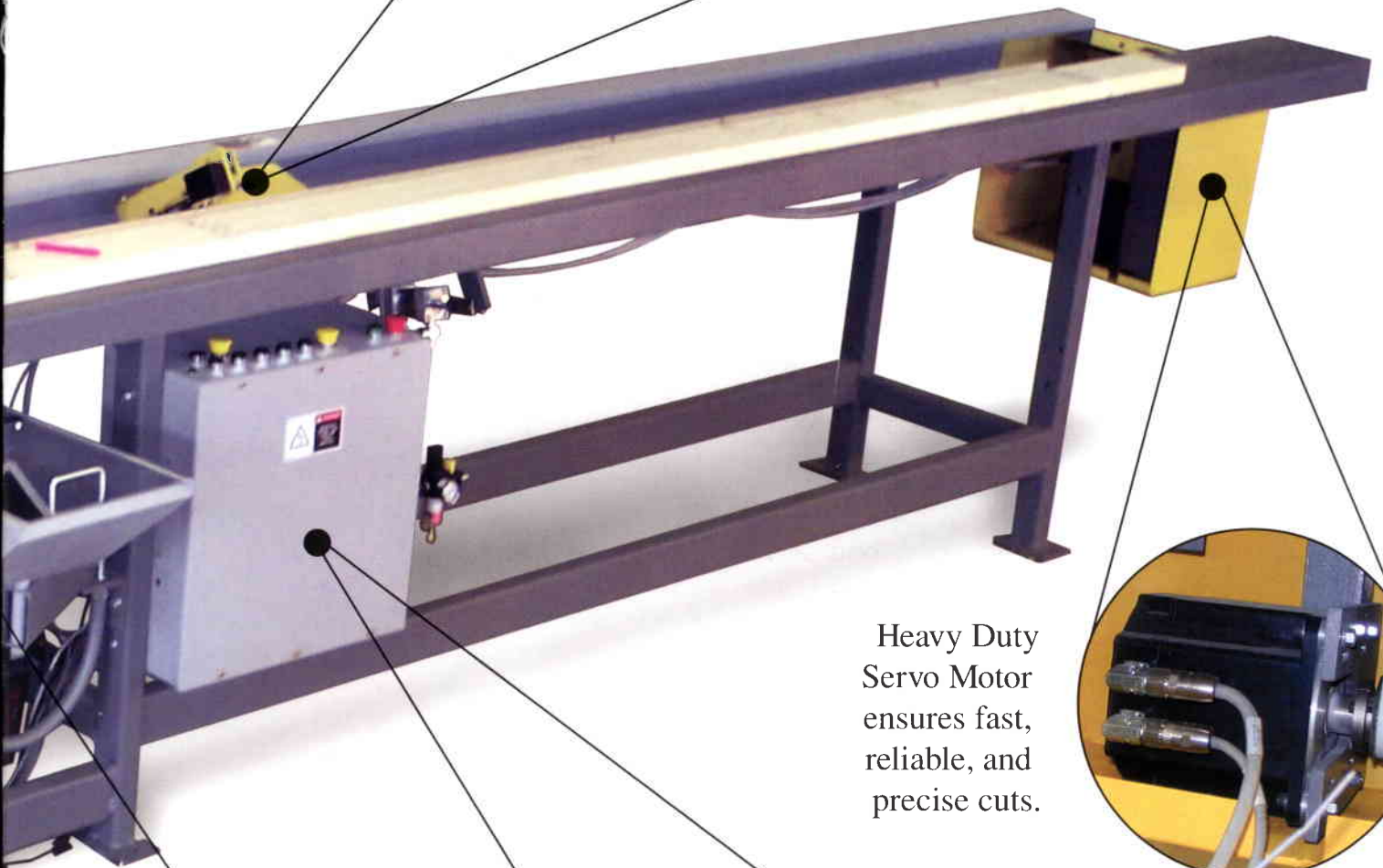
Mechanically  
operated Cut-Off  
saw is extremely  
fast, delivers a  
smooth cycle oper-  
ation for accurate and  
quality cut.

Quick Chop utilizes  
a full featured laptop  
computer, not just a  
keypad. It can be net-  
worked to import cut  
lists, check reports, and  
monitor operation

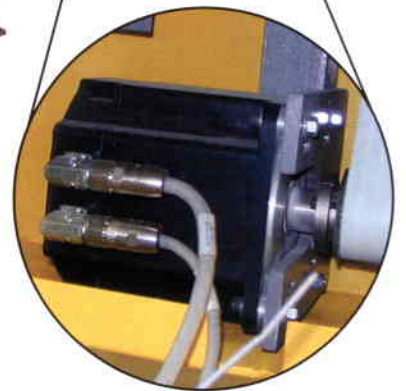
ditional Ink  
et Printer  
prints  
length,  
reference  
number,  
or cut bill  
directly  
into parts.



Luminescence  
Scanner detects  
crayon marks  
for defecting  
and grading.



Heavy Duty  
Servo Motor  
ensures fast,  
reliable, and  
precise cuts.



Quick Chop allows  
for multiple cut  
bills and multiple  
setups. A set of  
buttons indicate  
which Cut Bill to  
use for each board.

# Other Cameron Automation Products



**OPTI  
MATCH**

## The Industry Standard for Color-matching Solid Wood Panels

- **Increase Yield**
- **Reduce Labor Costs**
- **Improve Consistency**
- **Accurately Size Panels**
- **Long & Short Runs**



Color Scanners know the color and size of every board.

Automatically sizes, sorts, and stacks panels ready for gluing.



**The Opti-Match  
Does 3 Jobs  
At Once:**

1 Size  
2 Match  
+ 3 Stack

**SAVINGS**



**QUICK  
RIP**

## Complete Fence-Less Gang Rip Optimization in a Compact Size

- **Automate any Gang Rip Saw**
- **Highest Yield of any Rip Optimization system**
- **Laser Guided Ripping**
- **Increase Yield 5-8%**
- **Fits Current Layout**
- **Communicates with Quick Chop**



Servo Motor Ensures Perfect Positioning of Boards.

Pinch Rolls enable board to be fed for the highest yield of any Gang Rip Optimization System.



**Compact  
Simple  
& Complete**

1. Easy to Ship  
2. Easy to Install  
+ 3. Easy to Operate

**Easy to Pay For**

# Integrated Rough Mill Systems

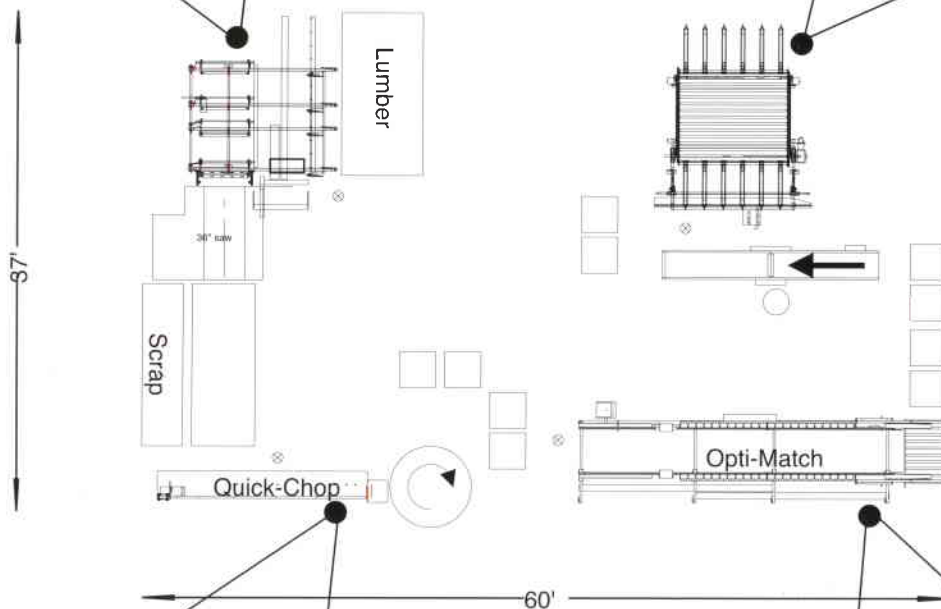
Start to build your new Cameron Automation/Taylor  
Rough End; The Integrated System for the Small to  
Medium Sized Shop.

Start with any of these machines.....but start now!

Quick Rip -  
Gang Rip Saw  
Optimization  
system



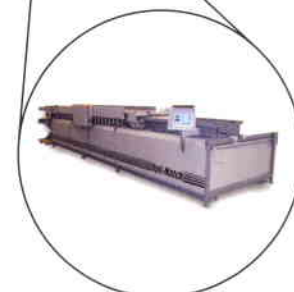
Taylor 20  
Fully  
Automated  
Panel  
Gluer



Quick Chop -  
Push Feed  
Optimization  
& Defecting  
system



Opti-Match -  
Color Matching  
& Panel Sizing  
system



# Specifications

## Dimensions:

Overall Height: 42" (46" on 18" Saw)  
Overall Width: 40" (45" on 18" Saw)  
Overall Length: 241" (289" for 16' Capacity)

## Price:

Standard Machine: \$37,250.00  
Call for pricing options

## Specifications:

Power Requirements: 220V (3 phase),  
30 Amps, 1/4" Air line, 5 cfm @ 80 psi  
Standard Board Capacity: 8" Wide, 1' to 12'  
Length, up to 8/4" Thickness.  
Blade Requirements: 14" Dia. - 1" Bore  
Saw Motor: 7 1/2 HP  
Dust Collection Requirements: 4" Dia. -  
400 CFM

## Options:

16' & 20' Length Capacity  
18" Saw with 12" Width Capacity on 4/4" Material  
Pneumatic Hold Down Cylinders  
Ink Jet Printer for Part Identification  
Printer for production  
Network Package

